



Centrala peleti ELECTRA

Principais Características

- Aprindere automată;
- Corp turnat;
- Poate fi conectat la un crono-termostat extern;
- Siloz cu o capacitate de 80 kg de peleti.

Descrição do Produto

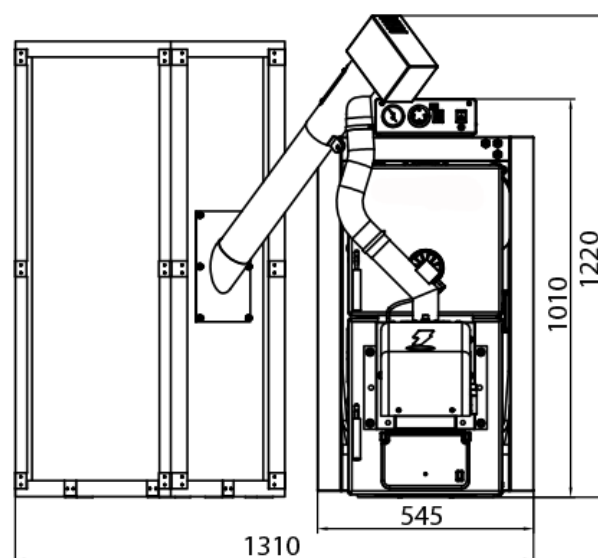
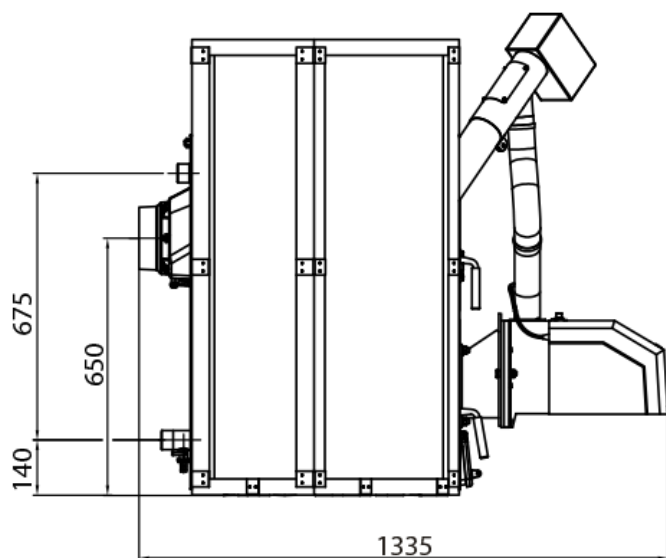
Centralele pe peleti ELECTRA sunt complet automate și au fost construite pentru producerea de apă caldă, cu ajutorul peletilor drept combustibil.

Corp turnat, disponibil în puteri de 25 și 32kw.

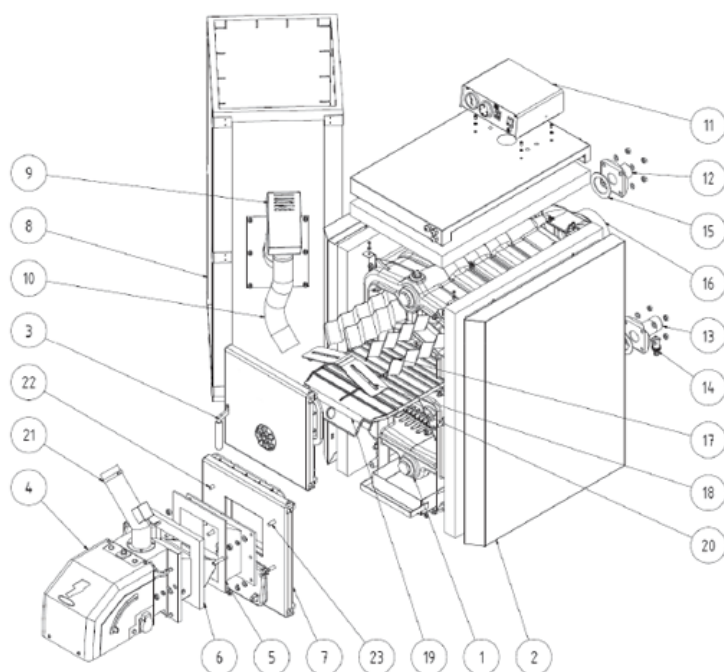
Modelos e Preços

Código	Modelo
0103-0412	ELECTRA 25 Biomass Boiler
0103-0413	ELECTRA 32 Biomass Boiler
0103-9904	Electra Conversion Kit for Wood

Dimensões



Componentes



- 1 -Boiler's kiln
- 2 -Side plate
- 3 -Cleaning door
- 4 -Burner
- 5 -Flange
- 6 -Flange joint
- 7 -Door allowing access to the ashes
- 8 -Fuel silo
- 9 -Fuel feeder
- 10 -Transport tube with spiral reinforcement
- 11 -Control panel
- 12 -EXIT
- 13 -Return
- 14 -Filling and emptying
- 15 -Gasket 90x60x3
- 16 -Smoke exit
- 17 -Turbulators
- 18 -Smoke passage
- 19 -Combustion chamber partition – Front plate
- 20 -Combustion partition
- 21 -Clamp
- 22 -Screw M10x50
- 23 -Screw M10x30

TECHNICAL DATA	ELECTRA 25	ELECTRA 32
Nr of elements	5	7
Nominal power (kW)	25	32
Min. power (kW)	7.5	9.6
Performance	86.8	87.9
Minimum consumption - Max. (kg/h)	1.74 - 5.8	2.45 - 8.2
Autonomy (hrs)	14.17 - 60.7	10.625 - 35.42
Fumes temperature (Degree C)	120 - 210	120 - 210
Air mass flow (kg/s)	0.009 - 0.018	0.014 - 0.021
Water volume (l)	40.9	50.3
Capacity of the Silo (kg)	80	80
Maximum pressure (Bar)	4	4
Test pressure (Bar)	8	8
Load loss ($\Delta T=20$ Degree C) (Pa)	80	110
Minimum return temperature	60	60
Necessary depression in the chimney	15 - 25	20 - 30
Dimensions (HxWxD)	1218x1309x1335	1218x1309x1527
Admission/return connections	1 1/2"	1 1/2"
Electric supply	230/50/1~	230/50/1~
Electric consumption (W)	100 / 1200	100 / 1200
Fumes exit diameter (mm)	156	156
Weight (kg)	332	401

